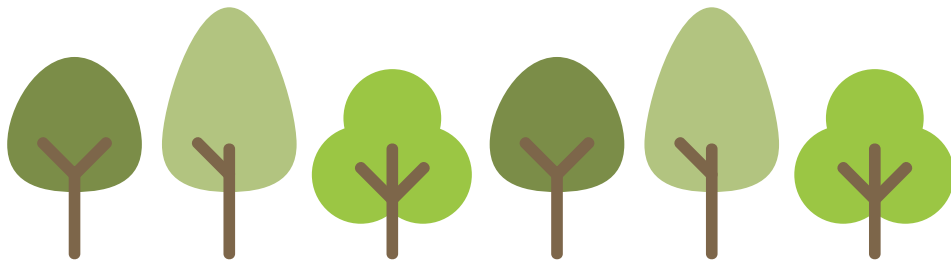




SchoolLinks

QUICK START GUIDE
for
Students



A Journey of Growth

#1 What is SchoolLinks?

SchoolLinks is a modern College and Career Readiness platform that your district partnered with to help prepare you for life after high school.

The platform offers more than 80 experiences, such as career interest inventory assessments, college and career search, internship matching, portfolio and more.

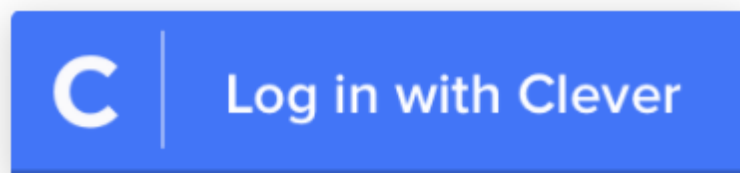
#2 Logging in

You can launch SchoolLinks from your **Clever Portal**.

- OR -

Go to: <https://app.schoollinks.com/>

And use the Log in with Clever option.

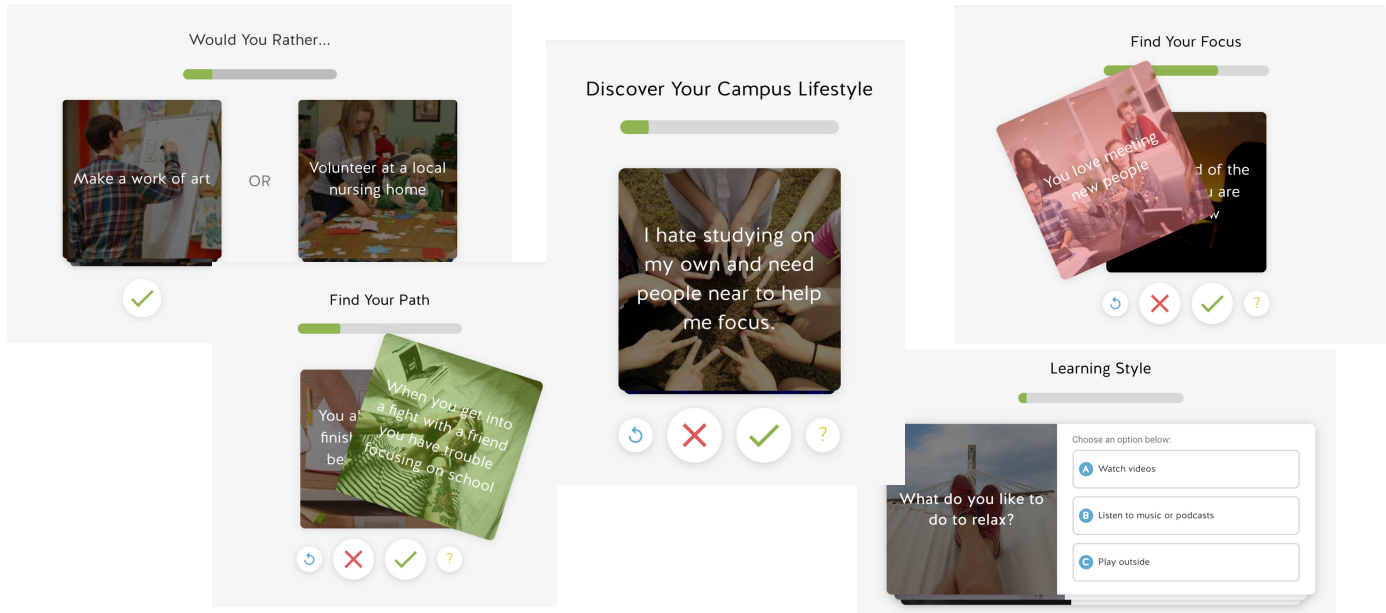


#3 Exploring SchoolLinks

Take swipeable surveys and quizzes!

- Learn more about yourself
- Help navigate the college and career planning process

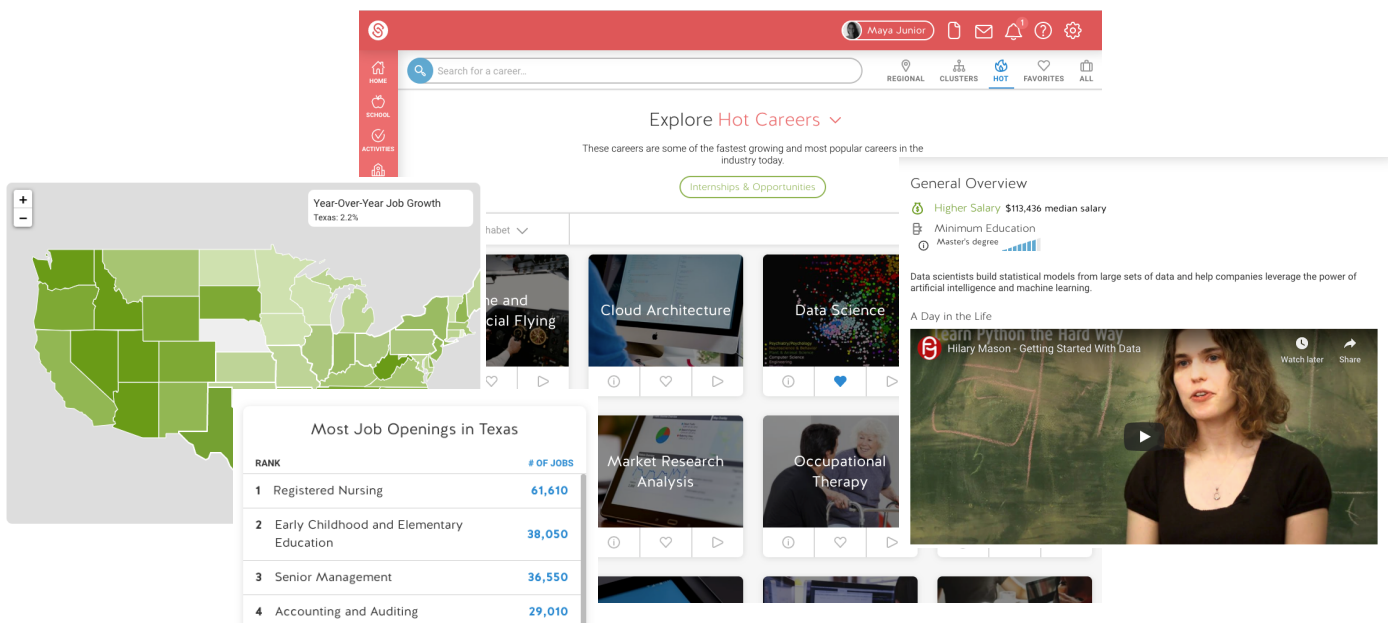
Where to Find: [Activities](#) >> [Assessments](#)



Take a tour of the Career Center!

- Research careers, ask questions
- Discover opportunities in your area and across the nation

Where to Find: [Careers](#) >> [Career Center](#)



Explore School Profiles!

- Learn information about campus life, the student body, etc.
- Watch selfie videos from current students
- Take Virtual Reality Tours

Where to Find: [Colleges](#) >> [School Search](#)

Campus Life

- School Size: Large (+15k Students)
- School Setting: City: Large
- Campus Housing: Available

Average Monthly Temperature (Fahrenheit)

JAN	FEB	MAR	APR	MAY	JUN	JUL	AUG	SEPT	OCT	NOV	DEC
52°	58°	62°	70°	76°	84°	86°	87°	81°	72°	62°	54°

Student Body

Race/Ethnicity Breakdown

- 43.9% White
- 24.3% Hispanic/Latino
- 22.40% Asian/Pacific Islander
- 4.3% Black or African American
- 3.8% two or more races
- 0.90% Race/ethnicity unknown
- 0.2% American Indian or Alaska Native
- 0.1% Native Hawaiian or Pacific Islander

53% Female / 47% Male

Student to Faculty Ratio: 18 Students to 1 Faculty

International Students: 5%

Students on Financial Aid: 64%

Part Time Students: 7%

VR Tour

Powered by YouVisit

LET'S GO

Videos from Current Students

- Food: Tips and Intro to Western C...
- Campus: as a College Transfer My Thoughts on The Univ...
- Campus: COLLEGE WEEK IN MY

Play the Game of Life!

- Map out your financial future based on life decisions you make

Where to Find: [Activities](#) >> [Game of Life](#)

Financial Outlook

Yearly Monthly

Net Income: \$60,005 | Total Expenses: \$67,916

Salary: \$76,930

Lifestyle: \$28,800

Loan Payment: \$4,254

Cost of Living: \$17,937

Taxes: \$16,925

Education Investment

15 Year | 3.0% APR

Total Loan Amount: \$38,147

Interest Expense: \$7,459

Loan Paid Off Age: 37

Total Edu Cost: \$54,688

Out of Pocket: \$24,000

Borrowed: \$30,688

Lifestyle

We've accounted for the bare amount of supporting yourself. Now, see how far your salary can go on the things you want.


CHOOSE A CATEGORY

- Family
- Pets
- Housing
- Vehicles
- Misc

Items:

- Acre on the Moon: \$25/year
- Netflix: \$100/year
- Gym Membership: \$700/year
- Child: \$17/year
- College Fund: \$1,450/year per child
- iPhone 20: \$900/year
- Vacation: \$1,300/year per person
- Entertainment: \$2,000/year
- Dine Out: \$2,400/year
- Boat: \$25,000/year
- Jetpack: \$200,000/year

#4 Have a question?

- **Check out the Help Center:** You can find the [Help Center](#) by clicking the  in the upper right corner of your account (login required).
- **Chat in your question:** Live Chat Support will put you in touch with a person who can address your question immediately.

#5 FAQ

I'm logged into my SchoolLinks account, now what?

A: The first thing you should do after you log into your account is to check your to-do list. Your to-do list can be found on your dashboard and will be the first page that opens after logging in. If you are all caught up with your to-dos, explore some of the features listed above!

What if I'm not sure about my future?

A: SchoolLinks is here to help you every step of the way. If you are not sure about what you want to do after high school, just start exploring! Take the first step and start researching careers and colleges and learn what you may or may not want. If you change your mind, you can update your SchoolLinks lists and goals at any point.


I've explored but I still have questions. What should I do?

A: If you still have questions after doing your own research, you can submit your questions to be answered by mentors. From the career page, click into Mentor Videos to submit your questions. Professionals with real experience in that career can respond and even answer with a selfie video!

Can my parents/guardian get an account?

A: Guardian accounts are first activated by district staff. If your district has guardian accounts set up, you can get a code for your guardian to sign up. To review directions for getting that claim code, [click here](#) or visit our Help Center.

I'm still confused

A: If you still have questions about using your SchoolLinks account, you can send a message to your counselor or teacher right from your account! Click on the  in the upper right corner to take you to the Message Center.